



## How Much Longer Must Taxpayers Wait?

End the GEA Now and Replace the Foundation Aid Formula

### *What you need to know:*

*The Gap Elimination Adjustment (GEA) is a formula in the state budget that reduces the amount of aid each school district is entitled to receive. New York State introduced the GEA in 2009-10 when it was known as the Deficit Reduction Assessment in order to partially reduce the state's \$10 billion budget deficit. It was used in 2011-12 to allocate an unprecedented \$2.56 billion statewide cut in aid. Over the past five years, it has been used to reduce state aid to school districts by \$7.82 billion.*

#### FACT #1

The Gap Elimination Adjustment (GEA) has reduced state aid to Long Island school districts by more than \$1.3 billion over the past five years. The GEA further reduces our region's disproportionately low share of aid generated by the funding formulas.

#### FACT #2

Had the 2015-16 GEA been eliminated when the state budget was established, Long Island's current school tax levy would be reduced by over \$117 million, or 1.4% lower. The GEA increases dependence on local property taxes to fund our schools at a time when schools are working under a tax levy cap, which limits the amount they can levy from taxpayers.

#### FACT #3

Long Island has 43 low-wealth (CWR <1.0) school districts, and they enroll 49% (219,281) of our student population. In 2015-16, these districts had only 53% of the GEA restored. Statewide, the restoration was 58.2%. Our poorest districts would have received an additional \$7 million if the GEA had been fully restored.

### *What we need to do:*

#### STEP #1

**Eliminate the GEA in 2016-17: Provide school districts with the full amount of aid generated by the funding formulas *without the GEA deduction.*** The GEA reduced aid to Long Island school districts by over \$117 million this year, with half of that coming from our 43 low-wealth (CWR <1.0) school districts.

#### STEP #2

**Replace the Foundation Aid Formula in 2016-17:** Foundation Aid comprises nearly 70% of all New York State school aid. The Foundation Aid Formula has been fatally flawed since the day it was introduced. Establish a new formula that recognizes the needs of our region and generates a fair share of aid for our schools.

# 2015-2016 IMPACT OF THE GEA SUFFOLK COUNTY 2015-2016

School District Name	2015-16 CWR	2015-16 NYS Budget GEA Net Loss	2015-16 GEA Loss Per Pupil	School District Name	2015-16 CWR	2015-16 NYS Budget GEA Net Loss	2015-16 GEA Loss Per Pupil
AMAGANSETT UFSD	19.632	-\$6,918	-\$37	MATTITUCK-CUTCHOGUE UFSD	2.444	-\$265,227	-\$212
AMITYVILLE UFSD	0.980	-\$209,362	-\$65	MIDDLE COUNTRY CSD	0.772	-\$3,300,175	-\$311
BABYLON UFSD	1.351	-\$571,006	-\$344	MILLER PLACE UFSD	0.939	-\$1,247,129	-\$443
BAY SHORE UFSD	0.849	-\$1,876,780	-\$314	MONTAUK UFSD	7.482	-\$10,000	-\$29
BAYPORT-BLUE POINT UFSD	0.959	-\$1,035,040	-\$433	MOUNT SINAI UFSD	1.059	-\$1,238,432	-\$504
BRENTWOOD UFSD	0.349	-\$45,042	-\$2	NORTH BABYLON UFSD	0.765	-\$1,637,859	-\$344
BRIDGEHAMPTON UFSD	30.785	-\$407	-\$2	NORTHPORT-EAST NORTHPORT UFSD	1.775	-\$1,209,857	-\$217
BROOKHAVEN-COMSEWOGUE UFSD	0.808	-\$1,965,770	-\$532	OYSTERPONDS UFSD	7.124	-\$8,205	-\$47
CENTER MORICHES UFSD	0.749	-\$102,072	-\$63	PATCHOGUE-MEDFORD UFSD	0.804	-\$3,901,108	-\$499
CENTRAL ISLIP UFSD	0.472	-\$46,688	-\$6	PORT JEFFERSON UFSD	2.804	-\$343,154	-\$307
COLD SPRING HARBOR CSD	3.214	-\$288,192	-\$163	QUOGUE UFSD	22.686	-\$7,178	-\$40
COMMACK UFSD	1.107	-\$2,213,955	-\$339	REMSENBERG-SPEONK UFSD	4.801	-\$9,831	-\$30
CONNETQUOT CSD	1.013	-\$3,123,673	-\$512	RIVERHEAD CSD	1.247	-\$643,547	-\$123
COPIAGUE UFSD	0.612	-\$35,384	-\$7	ROCKY POINT UFSD	0.728	-\$450,341	-\$133
DEER PARK UFSD	0.813	-\$969,506	-\$235	SACHEM CSD	0.860	-\$9,116,103	-\$672
EAST HAMPTON UFSD	7.445	-\$204,308	-\$108	SAG HARBOR UFSD	5.517	-\$116,733	-\$112
EAST ISLIP UFSD	0.929	-\$2,067,687	-\$531	SAYVILLE UFSD	0.994	-\$1,755,915	-\$597
EAST MORICHES UFSD	0.952	-\$275,007	-\$258	SHELTER ISLAND UFSD	10.246	-\$8,424	-\$37
EAST QUOGUE UFSD	2.212	-\$40,628	-\$93	SHOREHAM-WADING RIVER CSD	1.146	-\$629,834	-\$270
EASTPORT-SOUTH MANOR CSD	0.766	-\$431,854	-\$120	SMITHTOWN CSD	1.295	-\$3,233,828	-\$343
ELWOOD UFSD	1.059	-\$613,211	-\$269	SOUTH COUNTRY CSD	0.814	-\$2,857,882	-\$628
FIRE ISLAND UFSD	49.963	-\$8,269	-\$153	SOUTH HUNTINGTON UFSD	1.045	-\$1,403,200	-\$231
FISHERS ISLAND UFSD	16.917	-\$5,900	-\$83	SOUTHAMPTON UFSD	12.060	-\$171,550	-\$106
GREENPORT UFSD	2.067	-\$1,494	-\$2	SOUTHOLD UFSD	2.936	-\$135,545	-\$160
HALF HOLLOW HILLS CSD	1.523	-\$2,447,008	-\$290	SPRINGS UFSD	2.640	-\$13,242	-\$12
HAMPTON BAYS UFSD	1.563	-\$70,260	-\$33	THREE VILLAGE CSD	1.659	-\$3,315,048	-\$495
HARBORFIELDS CSD	1.266	-\$1,007,520	-\$312	TUCKAHOE COMMON SD	3.578	-\$18,215	-\$33
HAUPPAUGE UFSD	1.451	-\$1,154,334	-\$315	WEST BABYLON UFSD	0.864	-\$2,189,950	-\$545
HUNTINGTON UFSD	1.648	-\$958,750	-\$210	WEST ISLIP UFSD	0.962	-\$2,035,303	-\$452
ISLIP UFSD	1.159	-\$1,353,032	-\$483	WESTHAMPTON BEACH UFSD	4.190	-\$138,081	-\$79
KINGS PARK CSD	1.222	-\$1,230,510	-\$361	WILLIAM FLOYD UFSD	0.553	-\$836,371	-\$93
LINDENHURST UFSD	0.776	-\$1,498,276	-\$244	WYANDANCH UFSD	0.388	-\$10,862	-\$4
LONGWOOD CSD	0.792	-\$4,310,005	-\$474				
<b>Suffolk County Totals</b>						<b>-\$72,425,977</b>	<b>-\$296/Pupil</b>

2015-16 CWR (5/01/15): NYSED OMS - State Aid Unit - Data Unit  
 Legislative State Aid Runs 2011-12, 2012-13, 2013-14, 2014-15, 2015-16 (3/30/15) NYSED State Aid Office  
 2015-16 Budgeted Spending: 2015-16 Property Tax Report Card, NYSED OMS  
 Note: No CWR is reported by NYSED for Little Flower, New Suffolk, Sagaponack, and Wainscott School Districts

## FAST FACTS

- Long Island enrolls nearly 16.2% of the state's students, but receives only 12.2% of school aid.
- Despite the fact that Long Island school districts receive only 12.2% of school aid, 27.1% of the statewide GEA reduction is absorbed by Long Island school districts.

# 2015-2016 IMPACT OF THE GEA NASSAU COUNTY 2015-2016

School District Name	2015-16 CWR	2015-16 NYS Budget GEA Net Loss	2015-16 GEA Loss Per Pupil	School District Name	2015-16 CWR	2015-16 NYS Budget GEA Net Loss	2015-16 GEA Loss Per Pupil
BALDWIN UFSD	0.926	-\$1,586,665	-\$332	MALVERNE UFSD	1.095	-\$514,873	-\$303
BELLMORE UFSD	1.364	-\$304,027	-\$297	MANHASSET UFSD	3.039	-\$426,748	-\$126
BELLMORE-MERRICK CHSD	1.148	-\$1,944,011	-\$354	MASSAPEQUA UFSD	1.322	-\$1,874,174	-\$263
BETHPAGE UFSD	1.187	-\$837,006	-\$288	MERRICK UFSD	1.391	-\$540,228	-\$346
CARLE PLACE UFSD	1.517	-\$377,318	-\$276	MINEOLA UFSD	1.732	-\$467,383	-\$170
EAST MEADOW UFSD	1.065	-\$2,566,059	-\$372	NEW HYDE PARK-GARDEN CITY PARK UFSD	1.223	-\$315,687	-\$189
EAST ROCKAWAY UFSD	1.230	-\$326,856	-\$272	NORTH BELLMORE UFSD	0.954	-\$755,249	-\$362
EAST WILLISTON UFSD	2.269	-\$270,048	-\$156	NORTH MERRICK UFSD	0.971	-\$406,824	-\$336
ELMONT UFSD	0.791	-\$1,241,086	-\$341	NORTH SHORE CSD	2.216	-\$450,036	-\$165
FARMINGDALE UFSD	1.120	-\$1,682,851	-\$289	OCEANSIDE UFSD	1.267	-\$1,505,466	-\$269
FLORAL PARK-BELLEROSE UFSD	1.217	-\$302,111	-\$191	OYSTER BAY-EAST NORWICH CSD	5.025	-\$189,554	-\$116
FRANKLIN SQUARE UFSD	1.019	-\$464,639	-\$226	PLAINEDGE UFSD	0.968	-\$817,274	-\$263
FREEDPORT UFSD	0.602	-\$327,952	-\$47	PLAINVIEW-OLD BETHPAGE CSD	1.422	-\$1,060,809	-\$217
GARDEN CITY UFSD	2.409	-\$579,320	-\$153	PORT WASHINGTON UFSD	2.284	-\$647,448	-\$121
GLEN COVE CITY SD	1.501	-\$383,365	-\$121	ROCKVILLE CENTRE UFSD	1.723	-\$309,230	-\$87
GREAT NECK UFSD	2.927	-\$858,217	-\$134	ROOSEVELT UFSD	0.413	-\$15,342	-\$4
HEMPSTEAD UFSD	0.342	-\$18,346	-\$2	ROSLYN UFSD	2.227	-\$469,110	-\$151
HERRICKS UFSD	1.471	-\$910,671	-\$234	SEAFORD UFSD	1.136	-\$746,331	-\$319
HEWLETT-WOODMERE UFSD	1.733	-\$632,170	-\$211	SEWANHAKA CHSD	0.996	-\$2,565,626	-\$317
HICKSVILLE UFSD	1.354	-\$1,452,356	-\$277	SYOSSET CSD	1.974	-\$1,260,980	-\$200
ISLAND PARK UFSD	2.178	-\$140,505	-\$144	UNIONDALE UFSD	0.774	-\$298,261	-\$44
ISLAND TREES UFSD	0.928	-\$1,021,044	-\$439	VALLEY STREAM CHSD	0.920	-\$1,730,742	-\$371
JERICHO UFSD	2.667	-\$491,984	-\$167	VALLEY STREAM UFSD #13	0.965	-\$515,232	-\$247
LAWRENCE UFSD	3.573	-\$620,775	-\$219	VALLEY STREAM UFSD #24	0.882	-\$423,739	-\$382
LEVITTOWN UFSD	0.818	-\$2,584,430	-\$356	VALLEY STREAM UFSD #30	0.886	-\$67,170	-\$43
LOCUST VALLEY CSD	3.503	-\$356,940	-\$168	WANTAGH UFSD	1.034	-\$1,072,596	-\$347
LONG BEACH CITY SD	2.047	-\$1,953,210	-\$539	WEST HEMPSTEAD UFSD	1.292	-\$790,278	-\$393
LYNBROOK UFSD	1.263	-\$674,768	-\$241	WESTBURY UFSD	0.691	-\$14,692	-\$3
<b>Nassau County Totals</b>		<b>-\$45,159,812</b>		<b>-\$223/Pupil</b>			

2015-16 CWR (5/01/15): NYSED OMS - State Aid Unit - Data Unit  
 Legislative State Aid Runs 2011-12, 2012-13, 2013-14, 2014-15, 2015-16 (3/30/15) NYSED State Aid Office  
 2015-16 Budgeted Spending: 2015-16 Property Tax Report Card, NYSED OMS

## FAST FACTS – Long Island Is Not Wealthy

- Forty-three Long Island school districts, which is five more than last year, enrolling nearly 49% of the region's students, fall below the state's average in terms of income and property wealth (CWR <1.0).
- Over 33% of the students enrolled in Long Island school districts qualify for free or reduced-price lunch, according to federal guidelines. This is an increase of 4% over last year.

# FIVE-YEAR IMPACT OF THE GEA NASSAU AND SUFFOLK 2015-2016

School District Name	Total 5 Year Loss	School District Name	Total 5 Year Loss	School District Name	Total 5 Year Loss
AMAGANSETT UFSD	-\$177,905	HALF HOLLOW HILLS CSD	-\$21,036,474	PATCHOGUE-MEDFORD UFSD	-\$36,981,047
AMITYVILLE UFSD	-\$12,649,307	HAMPTON BAYS UFSD	-\$2,945,566	PLAINEDGE UFSD	-\$7,407,175
BABYLON UFSD	-\$4,994,086	HARBORFIELDS CSD	-\$8,791,487	PLAINVIEW-OLD BETHPAGE CSD	-\$9,329,189
BALDWIN UFSD	-\$14,017,820	HAUPPAUGE UFSD	-\$9,843,006	PORT JEFFERSON UFSD	-\$2,807,802
BAY SHORE UFSD	-\$21,484,638	HEMPSTEAD UFSD	-\$16,413,254	PORT WASHINGTON UFSD	-\$5,574,398
BAYPORT-BLUE POINT UFSD	-\$8,900,799	HERRICKS UFSD	-\$7,802,069	QUOGUE UFSD	-\$180,908
BELLMORE UFSD	-\$2,728,867	HEWLETT-WOODMERE UFSD	-\$5,525,403	REMSENBURG-SPEONK UFSD	-\$315,294
BELLMORE-MERRICK CHSD	-\$16,484,268	HICKSVILLE UFSD	-\$13,016,920	RIVERHEAD CSD	-\$12,105,966
BETHPAGE UFSD	-\$7,304,116	HUNTINGTON UFSD	-\$9,554,158	ROCKVILLE CENTRE UFSD	-\$5,712,252
BRENTWOOD UFSD	-\$39,167,697	ISLAND PARK UFSD	-\$1,468,896	ROCKY POINT UFSD	-\$9,386,366
BRIDGEHAMPTON UFSD	-\$329,592	ISLAND TREES UFSD	-\$9,023,202	ROOSEVELT UFSD	-\$10,558,941
BROOKHAVEN-COMSEWOGUE UFSD	-\$17,911,632	ISLIP UFSD	-\$11,876,812	ROSLYN UFSD	-\$3,829,501
CARLE PLACE UFSD	-\$3,322,040	JERICHO UFSD	-\$3,925,573	SACHEM CSD	-\$80,303,208
CENTER MORICHES UFSD	-\$3,441,600	KINGS PARK CSD	-\$10,575,548	SAG HARBOR UFSD	-\$1,222,712
CENTRAL ISLIP UFSD	-\$23,935,414	LAWRENCE UFSD	-\$6,360,723	SAYVILLE UFSD	-\$14,882,715
COLD SPRING HARBOR CSD	-\$2,366,713	LEVITTOWN UFSD	-\$23,149,511	SEAFORD UFSD	-\$6,486,551
COMMACK UFSD	-\$19,263,509	LINDENHURST UFSD	-\$23,797,038	SEWANHAKA CHSD	-\$22,601,393
CONNETHQUOT CSD	-\$26,757,075	LOCUST VALLEY CSD	-\$2,993,095	SHELTER ISLAND UFSD	-\$329,723
COPIAGUE UFSD	-\$17,819,858	LONG BEACH CITY SD	-\$15,795,430	SHOREHAM-WADING RIVER CSD	-\$5,933,907
DEER PARK UFSD	-\$11,497,381	LONGWOOD CSD	-\$41,097,419	SMITHTOWN CSD	-\$27,797,683
EAST HAMPTON UFSD	-\$2,096,778	LYNBROOK UFSD	-\$5,859,304	SOUTH COUNTRY CSD	-\$25,686,195
EAST ISLIP UFSD	-\$17,853,861	MALVERNE UFSD	-\$4,800,425	SOUTH HUNTINGTON UFSD	-\$15,154,854
EAST MEADOW UFSD	-\$22,397,266	MANHASSET UFSD	-\$3,591,386	SOUTHAMPTON UFSD	-\$1,893,306
EAST MORICHES UFSD	-\$2,501,562	MASSAPEQUA UFSD	-\$16,285,684	SOUTHOLD UFSD	-\$1,427,348
EAST QUOGUE UFSD	-\$750,968	MATTITUCK-CUTCHOGUE UFSD	-\$2,303,044	SPRINGS UFSD	-\$786,078
EAST ROCKAWAY UFSD	-\$3,072,704	MERRICK UFSD	-\$4,582,108	SYOSSET CSD	-\$9,925,745
EAST WILLISTON UFSD	-\$2,260,237	MIDDLE COUNTRY CSD	-\$48,555,200	THREE VILLAGE CSD	-\$28,068,320
EASTPORT-SOUTH MANOR CSD	-\$9,268,519	MILLER PLACE UFSD	-\$10,801,954	TUCKAHOE COMMON SD	-\$532,857
ELMONT UFSD	-\$12,727,769	MINEOLA UFSD	-\$4,378,123	UNIONDALE UFSD	-\$20,477,495
ELWOOD UFSD	-\$5,650,597	MONTAUK UFSD	-\$452,683	VALLEY STREAM CHSD	-\$14,970,219
FARMINGDALE UFSD	-\$15,035,053	MOUNT SINAI UFSD	-\$10,483,993	VALLEY STREAM UFSD #13	-\$4,924,562
FIRE ISLAND UFSD	-\$208,216	NEW HYDE PARK-GARDEN CITY PARK UFSD	-\$2,969,365	VALLEY STREAM UFSD #24	-\$4,063,575
FISHERS ISLAND UFSD	-\$156,372	NORTH BABYLON UFSD	-\$23,766,170	VALLEY STREAM UFSD #30	-\$2,870,020
FLORAL PARK-BELLEROSE UFSD	-\$2,835,935	NORTH BELLMORE UFSD	-\$6,667,677	WANTAGH UFSD	-\$9,348,165
FRANKLIN SQUARE UFSD	-\$4,202,152	NORTH MERRICK UFSD	-\$3,636,798	WEST BABYLON UFSD	-\$19,337,280
FREEPORT UFSD	-\$28,215,253	NORTH SHORE CSD	-\$3,621,701	WEST HEMPSTEAD	-\$7,025,713
GARDEN CITY UFSD	-\$4,553,467	NORTHPORT-EAST NORTHPORT UFSD	-\$10,372,649	WEST ISLIP UFSD	-\$17,651,773
GLEN COVE CITY SD	-\$5,342,552	OCEANSIDE UFSD	-\$13,181,671	WESTBURY UFSD	-\$10,845,781
GREAT NECK UFSD	-\$7,159,996	OYSTER BAY-EAST NORWICH CSD	-\$1,934,865	WESTHAMPTON BEACH UFSD	-\$1,619,783
GREENPORT UFSD	-\$736,126	OYSTERPONDS UFSD	-\$228,506	WILLIAM FLOYD UFSD	-\$36,048,424
				WYANDANCH UFSD	-\$6,783,593

**Long Island Totals**

**-\$1,328,232,407**

*Legislative State Aid Runs.*

## FAST FACTS

- Only 13% of the region's students are enrolled in the region's 34 "high-wealth" (CWR >2.0) school districts. These school districts receive 4% of the state aid allocated to Long Island.
- Almost one-third of Long Island school districts (39) will receive less in state aid (without building aid) in 2015-16 than they received in 2008-09. Eleven of these districts are low-wealth (CWR <1.0) school districts.

*For further information, visit the Suffolk County School Superintendents Association website at [www.suffolksuperintendents.org](http://www.suffolksuperintendents.org), or contact the SCSSA at [scssa@esboces.org](mailto:scssa@esboces.org).*

# HISTORY AND INFORMATION OF NYS FOUNDATION AID FORMULA

## *The Campaign for Fiscal Equity*

The Campaign for Fiscal Equity (CFE) lawsuit was brought against the state of New York by New York City parents claiming the state underfunded the city's public schools and, therefore, denied its students their constitutional right to a "sound basic education." The case made it through all levels of the judicial system. In this landmark case, *CFE v. State of New York*, the court made explicit the state's constitutional obligation to provide essential resources to all public school children. In 2006, the NYS Court of Appeals ruled in CFE's favor and found that New York State is violating students' constitutional rights to a "sound and basic education" by leaving schools without the necessary funding. The Court of Appeals delivered the final ruling ordering the state to ensure that New York City schools received the resources needed to fulfill the state's constitutional obligation and leaving the state with the option to create a statewide solution for all school districts.

## *Foundation Aid Formula*

In 2007, the governor and legislature enacted the Foundation Aid funding formula in order to comply with the Court of Appeals CFE ruling. In order to fulfill CFE, the state committed \$5.5 billion in Foundation Aid, to be phased in by 2011. Funding was to be distributed based on student need factors including poverty, English language learner status, number of students with disabilities, as well as the local level of poverty or wealth, based on income or property values.

The Foundation Aid formula replaced more than 30 existing categorical aids in order to create an equalizing and transparent funding stream. The four-year phase-in was essential to provide enough resources to outpace inflationary costs and fund improvements.

The formula and the implementation of Foundation Aid has been substantially delayed. Today, the amount of Foundation Aid owed to Long Island school districts since 2010-11 is \$3.6 billion when comparing the full amount due under the agreed formula and the amount actually paid.

## Foundation Aid Formula – What you need to know:

### *Fact #1*

- If the Foundation Aid formula had been fully funded, Long Island schools would have received an additional \$3.6 billion in Foundation Aid over the past six years.

### *Fact #2*

- Our lowest-wealth districts, who educate nearly one-half of Long Island's students, would have received an additional \$2 billion if the Foundation Aid had been fully funded.

### *Fact #3*

- The amount of Foundation Aid owed per pupil is five times greater in low-wealth districts than in high-wealth districts.

### *Fact #4*

- Had Foundation Aid been fully funded in 2015-16, Long Island's current school tax levy would be over \$724 million, or 8.5% lower.

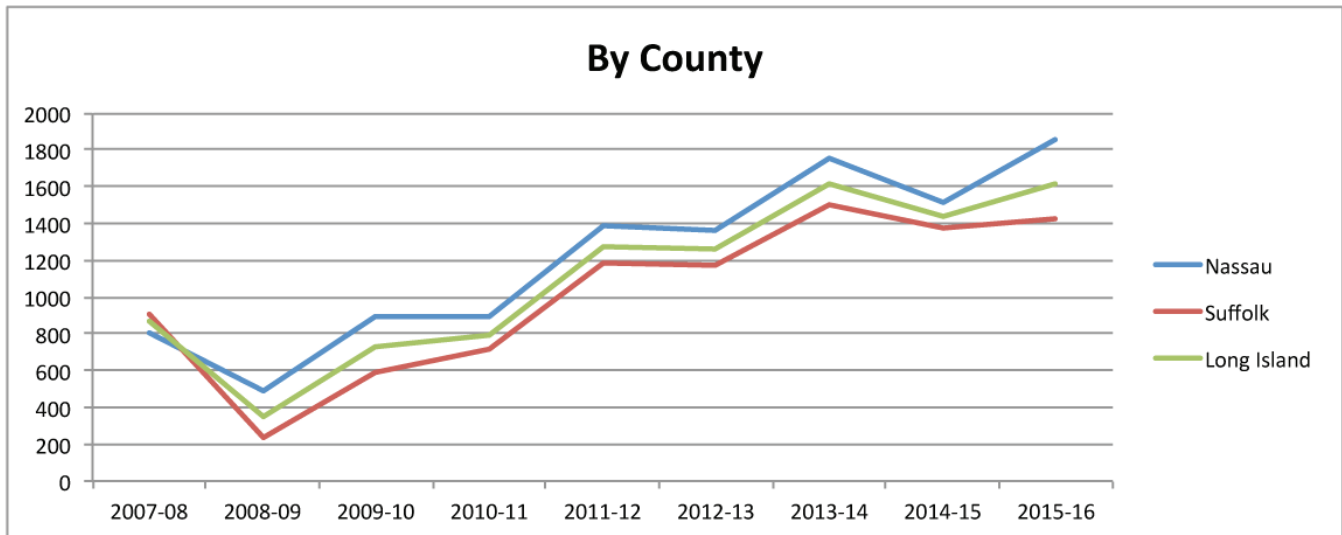
### *Fact #5*

- Long Island's Foundation Aid as a percentage of total Long Island aid is 2% lower than that of the state as a whole.

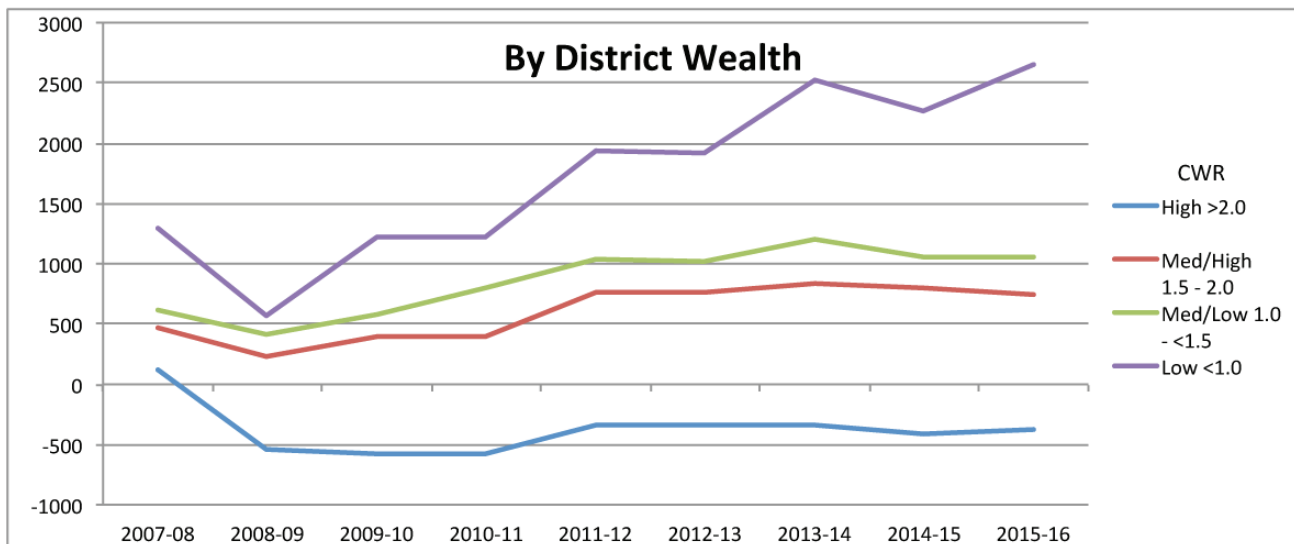
### *Fact #6*

- In 2015-16, Long Island's low-wealth districts received 30% less Foundation Aid than if they had been fully funded. Statewide, the reduction was only 21%. Our poorest districts would have received an additional \$176 million had they received the same reduction as the rest of the state.

# FOUNDATION AID OWED PER PUPIL HISTORY



	2007-08	2008-09	2009-10	2010-11	2011-12	2012-13	2013-14	2014-15	2015-16
<b>Nassau</b>	<b>\$809</b>	<b>\$490</b>	<b>\$897</b>	<b>\$889</b>	<b>\$1,384</b>	<b>\$1,359</b>	<b>\$1,752</b>	<b>\$1,515</b>	<b>\$1,851</b>
<b>Suffolk</b>	<b>\$913</b>	<b>\$231</b>	<b>\$588</b>	<b>\$713</b>	<b>\$1,186</b>	<b>\$1,177</b>	<b>\$1,502</b>	<b>\$1,370</b>	<b>\$1,429</b>
<b>Long Island</b>	<b>\$866</b>	<b>\$348</b>	<b>\$728</b>	<b>\$793</b>	<b>\$1,276</b>	<b>\$1,259</b>	<b>\$1,615</b>	<b>\$1,436</b>	<b>\$1,620</b>

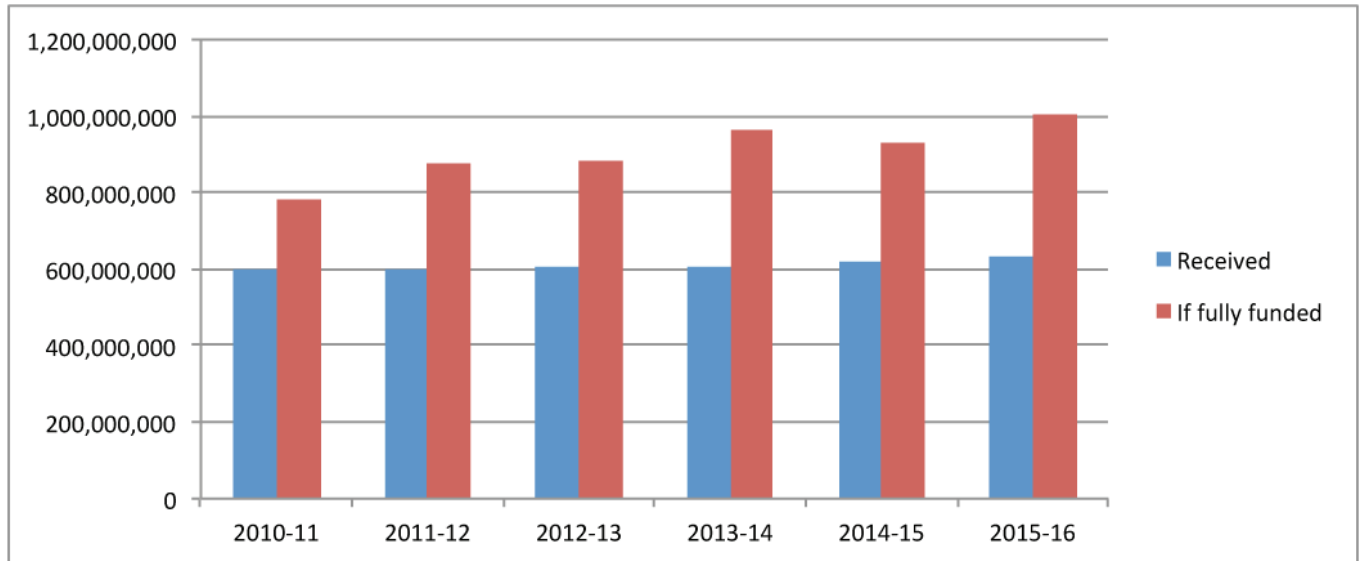


Wealth	2007-08	2008-09	2009-10	2010-11	2011-12	2012-13	2013-14	2014-15	2015-16
<b>High</b>	<b>\$118</b>	<b>-\$534</b>	<b>-\$586</b>	<b>-\$570</b>	<b>-\$344</b>	<b>-\$348</b>	<b>-\$333</b>	<b>-\$418</b>	<b>-\$377</b>
<b>Med/High</b>	<b>\$470</b>	<b>\$222</b>	<b>\$393</b>	<b>\$397</b>	<b>\$758</b>	<b>\$764</b>	<b>\$843</b>	<b>\$794</b>	<b>\$751</b>
<b>Med/Low</b>	<b>\$614</b>	<b>\$409</b>	<b>\$584</b>	<b>\$797</b>	<b>\$1,033</b>	<b>\$1,024</b>	<b>\$1,205</b>	<b>\$1,051</b>	<b>\$1,053</b>
<b>Low</b>	<b>\$1,287</b>	<b>\$568</b>	<b>\$1,220</b>	<b>\$1,226</b>	<b>\$1,941</b>	<b>\$1,912</b>	<b>\$2,515</b>	<b>\$2,268</b>	<b>\$2,643</b>

# FOUNDATION AID

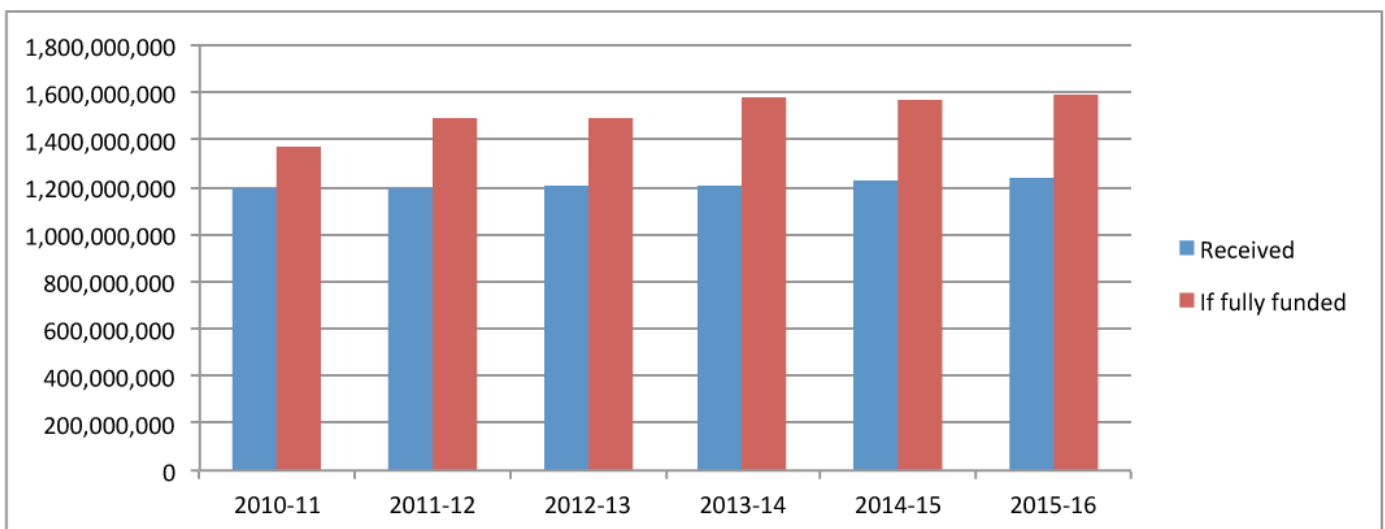
## NASSAU COUNTY

	2010-11	2011-12	2012-13	2013-14	2014-15	2015-16
Received	\$598,939,067	\$598,941,483	\$604,652,585	\$606,398,175	\$621,545,010	\$632,161,864
If fully funded	\$778,789,543	\$879,035,201	\$879,618,541	\$960,887,919	\$928,042,421	\$1,006,762,925
Difference	-\$179,850,476	-\$280,093,718	-\$274,965,956	-\$354,489,744	-\$306,497,411	-\$374,601,061



## SUFFOLK COUNTY

	2010-11	2011-12	2012-13	2013-14	2014-15	2015-16
Received	\$1,197,825,014	\$1,198,355,314	\$1,207,089,864	\$1,210,693,134	\$1,230,841,025	\$1,244,120,404
If fully funded	\$1,372,540,296	\$1,488,809,464	\$1,495,310,087	\$1,578,449,433	\$1,566,422,565	\$1,594,088,493
Difference	-\$174,715,282	-\$290,454,150	-\$288,220,223	-\$367,756,299	-\$335,581,540	-\$349,968,089



# THE NEW YORK FUNDING STORY:

## TRACKING SCHOOL AID AND THE EMPIRE STATE FUNDING OPPORTUNITY GAP 2007-2015

2007-08:

\$1.767 Billion Increase - With the Education Budget and Reform Act of 2007, the state provided \$1.1 billion in new classroom operating aid through the Foundation Aid formula to all state school districts. The Foundation Aid was tied to the Contract for Excellence, a program to guarantee that schools invested the funding in proven effective programs.

2008-09:

\$1.716 Billion Increase - The state provided \$1.2 billion in new Foundation Aid. Programs funded through the Contract for Excellence continued and were expanded. The opportunity gap began to shrink.

2009-10:

\$0 Increase - Flat funding translated into classroom cuts for school districts across the state.

2010-11:

\$1.4 Billion Cut - The state, under Governor Paterson, made massive cuts. School districts in every part of the state made cuts to programs and staff.

2011-12:

\$1.3 Billion Cut - The state, under Governor Cuomo, made enormous cuts, bringing the two-year cuts in state aid to \$2.7 billion. School districts continued to make program cuts.

2012-13:

\$805 Million Increase - A modest state aid increase was provided. This increase included only \$400 million in GEA and \$112 million in Foundation Aid (with the rest being expense-based aids and competitive grants). This school aid increase did not keep up with rising costs.

2013-14:

\$944 Million Increase - Another modest state aid increase was provided, of which \$517 million was in GEA and \$172 million was in Foundation Aid. School districts across the state were forced to make more programmatic cuts.

2014-15:

\$1.1 Billion Increase - The increase was the largest since Governor Cuomo took office, but was much smaller than the increases in the 2007-08 and 2008-09 budgets. Many districts were forced to make yet more classroom cuts, others were able to prevent cuts, and a few were able to restore some programs that had previously been cut. There was a \$250 million increase in Foundation Aid and a \$602 million increase in GEA.

2015-16:

\$1.29 Billion Increase - Again, this increase was larger than in the past, of which \$603 million was in GEA and \$251 million was in Foundation Aid. This increase, coupled with the decrease in the employer contribution rate for the Teachers' Retirement System, allowed for more stabilization. Many districts have been able to maintain programs, and some districts have been able to restore programs that had previously been cut.

### Data Sources:

- 2015-16 Property Tax Report Cards - NYSED - Office of Management Services
- Foundation Aid History - Questar III - State Aid and Financial Planning Services
- Individual School District Foundation Aid History Reports can be found at: <http://sap.questar.org/districts.php>